

AN ISO 9001:2015 COMPANY

NEXTGEN REVOLUTION
IN DRIP IRRIGATION



Manufacturer of
Drip Irrigations Products & Accessories





Introduction COMPANY

The **SATYAM** started its operation in 2011 based at Ahmedabad. Initially as a small scale unit, it has evolved today as a progressive company. We at Satyam actively seek every growth opportunity and strive hard to provide the best of **Irrigation** solutions to our various clients. We believe in the philosophy of delighting our customers by way of providing more than what they expect from us.

THE MISSION Statement

To create our niche in the **Drip Irrigation** Industries.

THE VISION Statement

To acquire the latest skills, know-how and the technology which would help us to serve our customers the best.

INFRASTRUCTURE

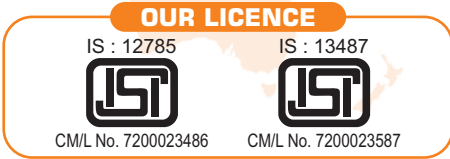
Our customers focused approach has guided as to take few strategic decisions and the investment in infrastructure is one of them. We have a well-developed robust infrastructure in place to produce high quality approved range of **Irrigations** products for our customers. We have advance tool rooms and our injection moulding division is capable for preparing all types of drip **Irrigation** components. We have all necessary instruments & equipments, in order to facilitate proper checking and inspection of quality of our products.

THE PRODUCTS

We have prominent name in the industry in supplying different kinds of **Irrigation** moulded components for your requirements. We are specialized in manufacturing various types of in-line, on-line emitter, filters, valve products, drip accessories and all kinds of drip **Irrigations** system.

Our MOTTO

At **Satyam**, we believe in retaining our customer and we work to build long-term relationship with them.



3 Piece Flange Ball Valve



Specification of Materials

No.	Description	Material	Qty.
1	Body	Polypropylene	1
2	Flange End	Polypropylene	2
3	Ball	P.P. Compound	1
4	Seat Ring	PTFE	2
5	Stud & Nut	M.S. Zink plated / S.S. 304 / S.S. 316	Req.
6	Stem Seal Ring	PTFE	1
7	Stem	P.P. Reinforced with M.S.	1
8	Stem 'O' Ring	Neoprene	1
9	Handle Hex Pin	S.S. 304	1
10	Handle	P.P. Reinforced with M.S.	1
11	Body Seal Ring	Neoprene / PTFE	2

3 Piece Threaded Ball Valve

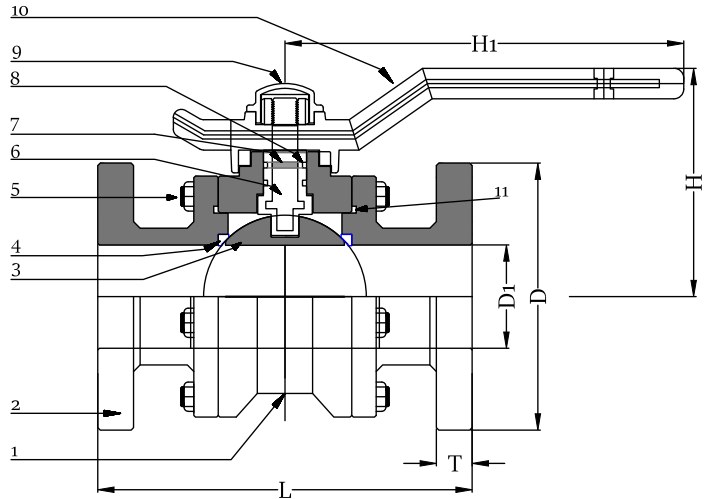


POLYPROPYLENE FLANGED VALVE

Size: 2" / 2½" / 3" / 4"

Backed by rich industry experiences, we are highly engaged in manufacturing, exporting and supplying an optimum quality range of Three Piece Flange End Ball Valve. Owing to its accurate dimensions and easy installation features, our offered ball valve is highly demanded among our precious clients. In adherence to the set industry standards, the provided ball valve is well-designed and manufactured by our highly experienced professionals. Furthermore, our clients can avail this ball valve from us at industry leading prices.

- Features:**
- Fine finish
 - Precisely designed
 - Accurate dimensions



Valve Size	Flange Diameter (D)	D1	Length (L) Face to Face	T	Height Centre (H)
2"	165	50.0	205	21	117.5
2½"	185	63.0	235	26	147
3"	200	75.0	250	26	162
4"	230	100.0	300	27	185

Note: (All Dimensions are in mm)(± 2mm)

Size: 2" / 2½" / 3" / 4"

- Body : Polypropylene
- Ball : P.P.R
- Seal : Ring Teflon
- Packing Washer : PTFE
- Stem Seal Ring : Teflon with O-Ring
- Handle : M.S.P.P. Coated
- Studs : M.S.P.P. Coated
- Hex, Nut, Washers : M.S. with P.P. Cover

FILTER



DISC ELEMENT



SCREEN ELEMENT



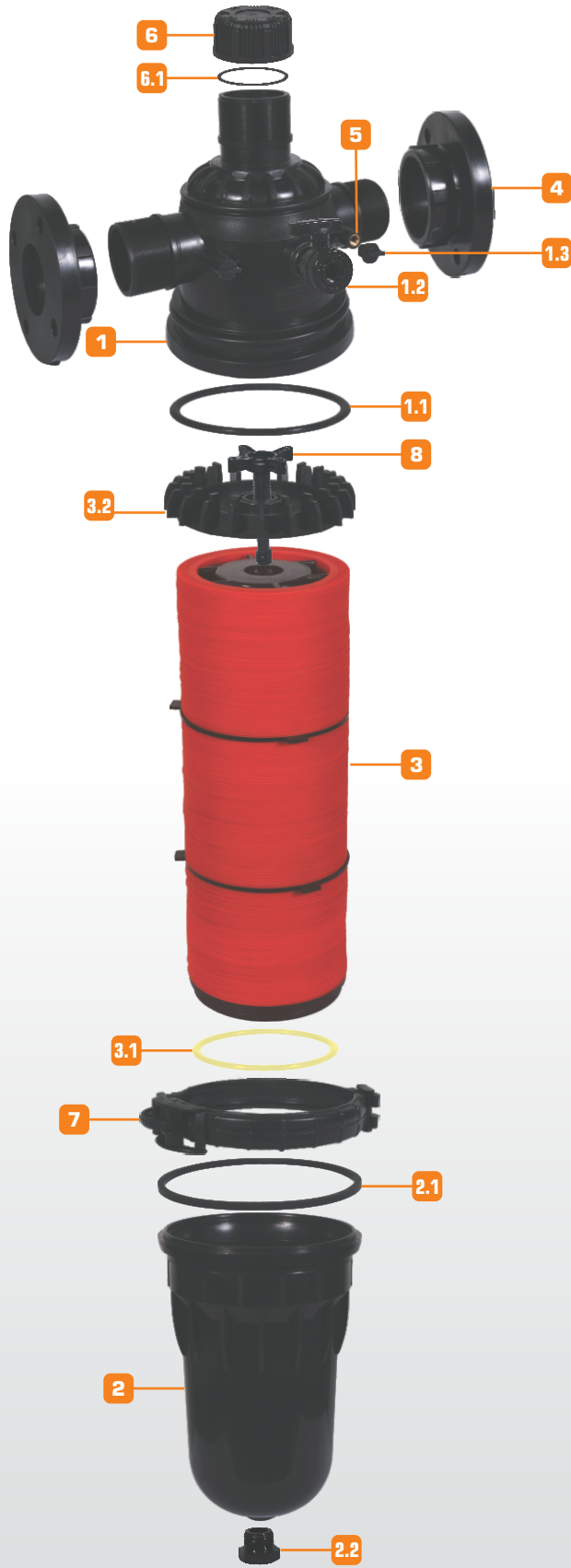
In order to cater the variegated demands of our precious clients, we have come up with a wide range of quality assured Disc Filter. This Disc Filter is widely used in irrigation system for primary filtration purpose. Offered Disc Filter is exclusively designed and manufactured under the guidance of our highly experienced professionals using the best quality raw material and modern technology. Owing to its durability and easy installation features, our provided Disc Filter is highly demanded among our precious clients.

FEATURES:

- The filters are made from special chemically bonded polymer which are weather resistant.
- Filters are manufactured out of specialized plastic, which is tailor made for this product.
- Various sizes are available as per requirement.
- Easy to install & Clean.
- Screen filter cartridges are made of Stainless Steel - Double mesh which are corrosion resistant.
- Disc Filters are made with special Helix system which gives better performance & results.
- All parts easily available as per customer requirement.
- We have provided with tail piece flange for flange connection.

MODEL	SI IPL-230 (2") SI IPLSF-230 (2")	SI IPL-2540 (2½") SI IPLSF-2540 (2½")	SI IPL-350 (3") SI IPLSF-350 (3")
Nominal working pressure	2 kg/cm2	2 kg/cm2	2 kg/cm2
Maximum working pressure	6 kg/cm2	6 kg/cm2	6 kg/cm2
Nominal flow-rate	30m3/hr (500 ltr/min)	40m3/hr (667 ltr/min)	50m3/hr(834 ltr/min)
Range of flow-rate	24 to 40 (m3/hr)	32 to 48 (m3/hr)	40to 60 (m3/hr)
Filtration surface	1300 cm2	1300 cm2	1750 cm2
Max clean pressure drop	0.5 kg / cm²	0.5 kg / cm²	0.5 kg / cm²
Size of aperture	120 Mesh	120 Mesh	120 Mesh

FILTER 3D ASSEMBLED VIEW



PART No.	DESCRIPTION
1	Housing
1.1	Housing 'O' Ring
1.2	Flush Cock
1.3	Nut
2	Lid
2.1	Lid 'O' Ring
2.2	End Cap
3	Disc Element
3.1	Element 'O' Ring
3.2	Element Top Locking Plate
4	Tail Piece Flange
5	Pressure Check Point
6	Port Closing Cap
6.1	Closing Cap 'O' Ring
7	Clamp
8	Thread Screw

CLEANING INSTRUCTION:-

- Cleaning of the water must be done when pressure deferential across 0.5 kg/cm2.
- Install the strainer in the main line after sand filter vertically / horizontally. Inlet should be on top side & outlet at the top. Provide proper support to ensure it does not vibrate due to water pressure.
- Ensure ball valve is fitted before inlet of strainer.
- Follow closing instructions as at 'd' above.
- To start the flow opens the flush valve gradually and slowly.
- Ensure recommended pressure at inlet and slowly.
- Filter element should be cleaned regularly on time by opening flush and closing outlet.
- Clean element talking it out flush valve and closing outlet.
- Clean element talking it out under water tenderly & periodically.
- Water soluble fertilizer and pesticides should be given through Ventury. Strong chemical should not be poured into filter directly as it will affect filter element.

HYDROCYCLONE FILTER

Siiplhf - 350



SPECIFICATION:

- Available in :
2" - Siiplhf - 220
2½" - Siiplhf - 2540
3" - Siiplhf - 350
- Material of Construction :
Reinforced Polypropylene / Nylon
- Available Connections :
BSPT Male Threaded / Flange / Victaulic
- Maximum Operating Pressure :
6 Kg/cm³

SLIP ON FLANGE



Size: 2" / 2½" / 3"

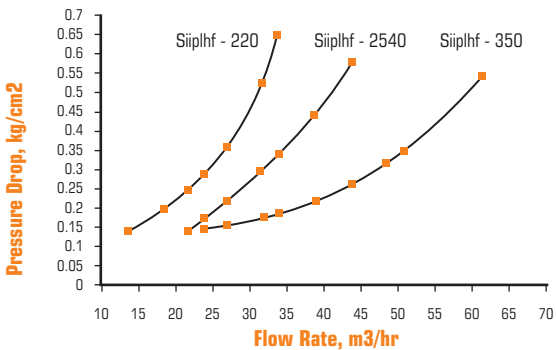
Features:

- Material: Reinforced Polypropylene.
- Color: Black
- Chemical Resistant: Good Resistance to Strong acids except highly active oxidizers, such as nitric acid. It also has excellent resistance to weak and strong alkalies and to most organic solvents.

FEATURES:

- Body made of reinforced engineering plastic for durability.
- Hydro dynamically designed to create maximum centrifugal action.
- Dirt can be easily flushed out through drain port. Collector chamber can be easily cleaned by opening collector cover.
- Clamp easily open/close from collector chamber.
- Easy to installation and low maintenance.
- Stand for height increase.
- Specially designed high wear resistant rubber cone in the bottom avoid wear due to strong sand vortex.

PERFORMANCE GRAPH:



MODEL NO.	Inlet / outlet (inch/mm)	Range of flow rate (m3/hr)	Nominal flow rate (m3/hr)	Dimensions in mm					Capacity of Underflow Chamber (liter)	Gross Weight
				A	B	C	D	E		
Siiplhf - 220	2"/50	20-28	25	894	762	206	151	395	8	7.2 kg
Siiplhf - 2540	2½"/65	28-35	30	894	770	206	151	395	8	7.3 kg
Siiplhf - 350	3"/80	35-52	50	942	820	245	175	395	8	9.5 kg

VENTURI INJECTOR



Size: 2" (50 mm)

FEATURES:

- Operated by existing water pressure.
- No Moving Parts.
- Fast and simple operation.
- Adaptable to all irrigation systems.
- High quality materials resistance to chemicals used in agriculture.
- Made from specially in high quality engineering materials.
- All fertilizer & chemicals resistance.
- Low pressure operating.
- Easy installations.

Sr No.	Pressure (Kg./cm ²)	Pressure (Kg./cm ²)	Motive flow liter/hr	Water Suction liter/hr
	Inlet	Outlet		
1	0.75	0.25	14740	1005
2	1.00	0.25	16030	1320
3	1.50	0.25	18468	1940
4	2.00	0.25	23320	2599
5	2.50	0.15	24600	2784
6	3.00	0.00	24624	2763

Note: ± 10% Variation

PUSH FITTING

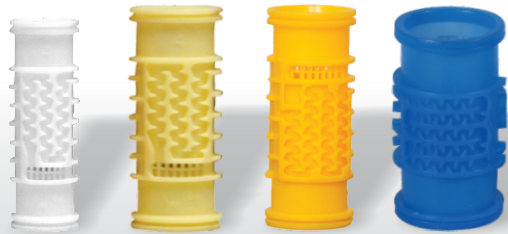


Size: 32mm

Material: PP

- Push Fit Elbow
- Push Fit Joiner
- Push Fit End Cap
- Push Fit MTA
- Outside Threaded Tee
- Inside Threaded Tee

INLINE EMITTER (DRIPPER)



Size: 12mm/4 LPH, 12mm/2 LPH
16mm/4 LPH, 16mm/2 LPH
20mm/4 LPH, 20mm/2 LPH

ONLINE DRIPPER



Size: 4 LPH, 8 LPH

MINI SPRINKLER



Size: ½"

POLY FITTINGS



Size: 12 mm, 16 mm, 20 mm

TOP ENTRY BALL VALVE



Technical Data:

- Construction : One piece body
- Design : Top entry
- Size Range : 40, 50, 63, 75 mm
Screwed / plain end
- Max working Temp.: 90° C
- Gasket / Stem seal : Nitrile
- Test Pressure : 10 kg / Cm²

Features:

- One Piece Top Entry Ball valve is manufactured from polypropylene, a chemically inert thermoplastic.
 - One Piece Top Entry Ball valve is specially suited for Drip Irrigation System.
 - One-piece rugged body eliminates joints / unions / Gaskets / Fastners and consequently eliminates leakage and corrosion.
 - On line maintenance possible as all internals can be replaced without removing the valve from the pipe-line.
 - Since this ball valve contains no metal parts, failure due to corrosion eliminated.
- Carbon black and UV stabilizers resist ultraviolet rays and prevent degradation of PP in sun light exposure.
- Proper care taken for full strength and leakage proof manufacturing design.
- Every piece is tested before dispatch. Hydraulically tested at 10kg. / cm².
- Approved and used by many known Drip Irrigation manufacturers.

TOP ENTRY BALL VALVE



Technical Data:

- Construction : One piece body
- Design : Top entry
- Size Range : 32 mm
Screwed / plain end
- Max working Temp.: 90° C
- Gasket / Stem seal : Nitrile
- Test Pressure : 10 kg / Cm²

U-PVC SOLID BALL VALVE

Size :
1/2" , 3/4" & 1"



DRAIN VALVE

Size :
1/2" & 3/4"
Material: Nylon



SOLID BALL VALVE LONG HANDLE



Size: 2" / 2 1/2" / 3"

- Features:
- Solid body molded design.
 - Manufactured from high grade high quality polypropylene material.
 - Excellent corrosion and chemical resistance.
 - One piece rugged body eliminates joints / union / gaskets and consequently eliminate leakage.
 - Available in threaded and socket end connections.
 - Hydraulically tested at 10kg/cm²
 - Maximum working temperature 80° C.

Application:

For flow control in Horticulture and agriculture irrigation.



No.	Description	Material	Qty.
1	Stem	Polypropylene	1
2	Ball	Polypropylene	1
3	Body	Polypropylene	1
4	Stem 'O' ing	Nitrile	1
5	Cap	Polypropylene	1
6	Handle	Polypropylene	1
7	Seat Ring	PU Compound	2

TRUE UNION BALL VALVE

Size: 2" / 2 1/2" / 3"

- Features:
- Union type ball valve is manufactured from polypropylene, highly resistant to various conditions.
 - Union Type ball valve is specially suited for Drip Irrigation System.
 - Easy manageable with union ends for installation and removal.
 - Union type ball Valve contains no metal parts, failure due to corrosion eliminated.
 - Excellent flow characteristics.
 - Proper care taken for full strength and leakage proof manufacturing design.
 - Hydraulically tested at 10kg/cm²



HEADER



Size: 2" / 2½" / 3"

- Features:**
- Both 1" & 1½" threaded connection for air vents in single port.
 - Double Pressure gauge ports with brass bushes.
 - Support for assembly to maintain sturdiness.
 - Made of Galss reinforced engineering plastic which is much stronger than PP.
 - UV Stabilized
 - Corrosion resistant which is a major problem with metal Head Units.

ELBOW



Size: 2" / 2½" / 3"

- Features:**
- **Available in:**
 - 2" - BSP Male threaded.
 - 2½" - BSP Male threaded.
 - 3" - BSP Male threaded.
 - **Material:** Reinforced Polypropylene.
 - **Color:** Black
 - Smooth flow and minimal pressure drop.
 - UV Stabilized.

TEE



Size: 2" / 2½" / 3"

- Features:**
- **Available in:**
 - 2" - BSP Male threaded.
 - 2½" - BSP Male threaded.
 - 3" - BSP Male threaded.
 - **Material:** Reinforced Polypropylene.
 - **Color:** Black
 - Smooth flow and minimal pressure drop.
 - UV Stabilized.

SERVICE SADLE



Size: 2" / 2½" / 3"

AIR RELEASE VALVE



Size: ¾" / 1" / 1.5" & 2"

VACUUM BRAKER



Size: ½" / ¾" & 1"
Male Thread

FLUSH VALVE



Size: 40mm To 75mm
Material Specification:
Top Cover : PP Compound
Body : Abs/Pvs Compound
Screw : Zink Plated MS
'O' Ring : Nitrile/EPDM

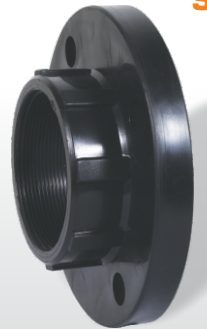
TAIL PIECE

Size: 2" / 2½" / 3" & 4"



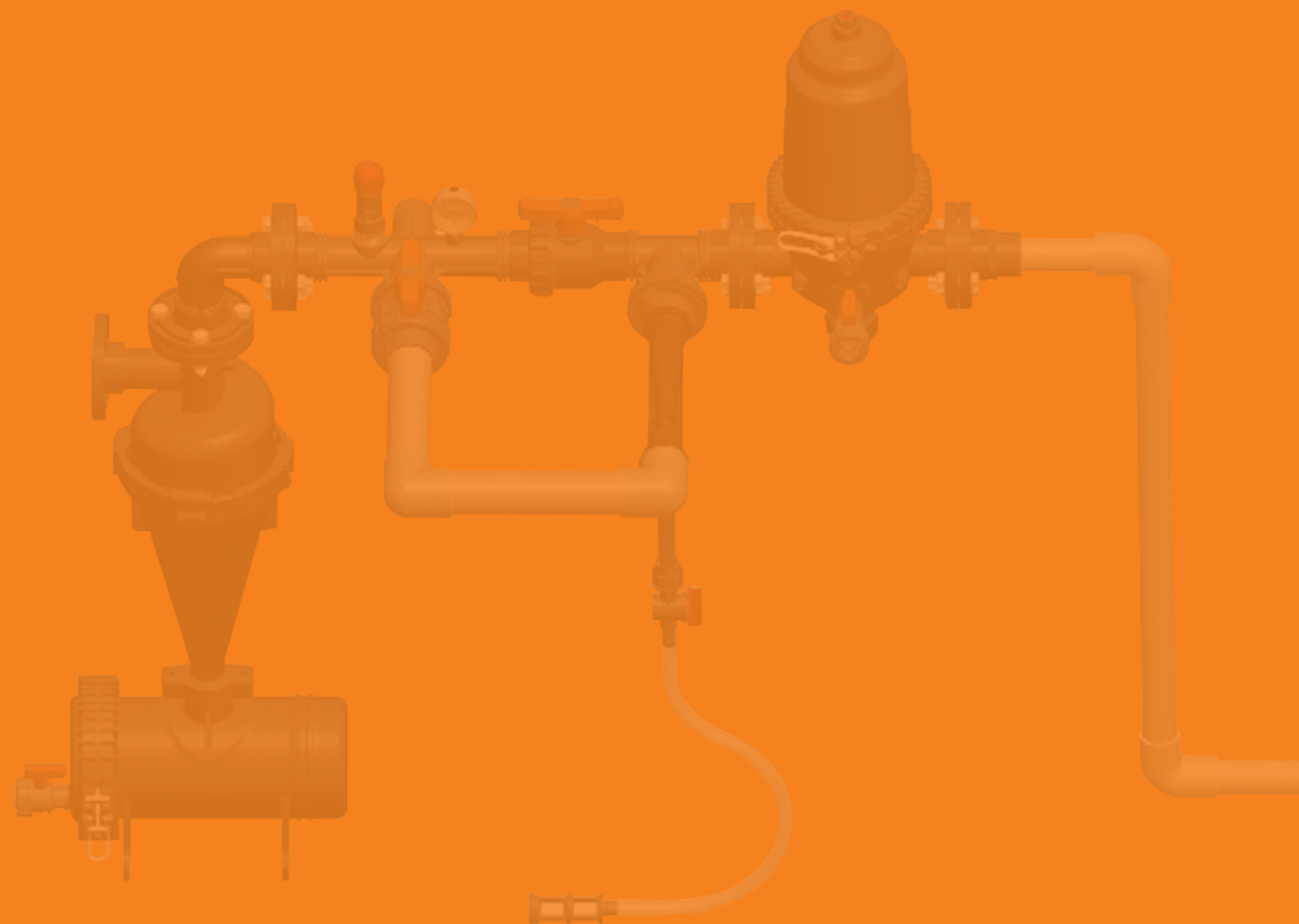
THREADED FLANGE

Size: 2" / 2½" / 3" & 4"



MANUFACTURING UNIT





Satyam
IRRIGATIONS (INDIA) PVT. LTD.

Office & Factory
Plot No. 367, Road No.8,
Kathwada G.I.D.C., Kathwada,
Ahmedabad-382430. (Gujarat) INDIA

Mo.: +91 99740 16318 | +91 90990 63330
Phone : +91 79 29702440
info@satyamirrigations.com | www.satyamirrigations.com